

[Back to Obadiah Ward](#)[Copy to my tree](#)

INFERRED

## DNA Results for Obadiah Ward

Name Obadiah Ward  
Source DNA from Charles Rivera Ward in the tree "Ward-Spittler-Lyon-Metz-Lang Family Tree"  
Type Paternal Lineage Test (manually entered)  
Paternal Haplogroup Haplogroup R1b

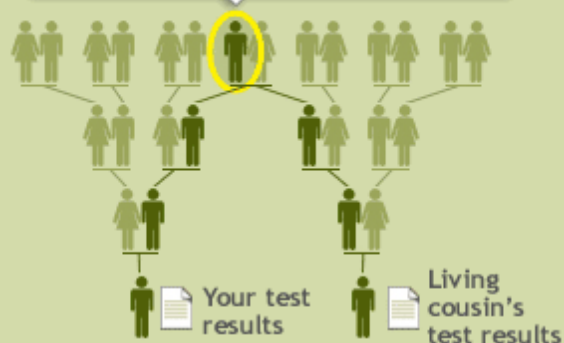
### Verify a Family Tree Connection with a DNA Test

It starts with a simple cheek swab

[Learn More](#)

**Order Test Now**

Closely matching DNA can verify a connection between family trees.



#### DNA Results

DYS19a	14	DYS385a	11	DYS385b	15	DYS388	12
DYS389I	13	DYS389II	30	DYS390	23	DYS391	11
DYS392	13	DYS393	13	DYS426	12	DYS437	14
DYS438	12	DYS439	12	DYS442	12	DYS444	12
DYS446	13	DYS447	25	DYS448	19	DYS454	10
DYS455	11	DYS458	15	DYS459a	9	DYS459b	10
DYS460	10	DYS462	11	DYS463	24	DYS464a	15
DYS464b	17	DYS464c	18	Y-GATA-A10	15	Y-GATA-H4	12
YCAIIa	19	YCAIIb	22				

Ancient Ancestry

#### The Artisans -- R1b:

Ancient Ancestry haplogroup R1b, the Artisans, first arrived in Europe from west Asia about 35,000- 40,000 years ago at the dawning of the Aurignacian culture. This culture was remarkable for its subtle yet significant technological progress, like the shift from random flint collection to the use



of a single stone core to shape flint tools as needed.

Aurignacian decorative beads and jewelry could also be the first sign we have of the uniquely human quality of self-awareness and adornment. Additionally, some anthropologists believe that the Aurignacian culture was the first to paint. Either way, the people of this time period left behind fascinating cave paintings in France, Spain and Portugal.



**Ancestry.com DNA Overview** - Discover genetic genealogy and ancient ancestry with a DNA cheek-swab test. Find leads based on DNA testing, surnames, geography and haplogroups. Expand your family tree, find potential genetic cousins, see maps and make connections. Learn about the science, lab work and value of your genes in tracing your personal family history. We explain and help you choose a mitochondrial (mtDNA) or Y-chromosome lineage test in a few easy steps.

[Blog](#)[FAQ](#)[Success Stories](#)[Privacy Policy](#)[Ancestry UK](#) | [Ancestry CA](#) | [Ancestry AU](#) | [Ancestry DE](#) | [Corporate Info](#) | [Affiliate Program](#) | [PRIVACY STATEMENT](#) | [Contact Us](#)© 2010 Ancestry.com - [Terms and Conditions](#)